

Crossing dangerous for pedestrians

Accident outside of Richmond college's main intersection raises safety concerns for student drivers and pedestrians

By Joseph Ng
Kwantlen Chronicle

A collision outside Kwantlen's Richmond campus 10 days ago is the latest at an intersection that student drivers and pedestrians feel is dangerous. The crash involved a silver Acura MDX sport utility vehicle and a red Honda Accord, which took the worst of it.

"They almost crashed head on," says Peter Carter, a Kwantlen student and witness to the incident. "The little Honda was turning left (onto Kwantlen Road) when the SUV smashed straight into it. I'm pretty sure the SUV was probably speeding or not paying attention. They both ended up on the sidewalk."

The Acura was headed west on Lansdowne Road as the Accord turned onto Kwantlen Road. Both vehicles ended up on the sidewalk embankment closest to the Lansdowne Mall parking lot. Parts were strewn all over the grass from both vehicles.

The intersection is a problem for Kwantlen drivers. "I always have trouble turning back onto (Lansdowne Road) after class. I take the Oak Street bridge to get home," says Vanessa Doyle, a first-year interdisciplinary design student. "It's the

worst when it's busy after class or when it's raining. It's actually quite scary."

The same sentiments are offered by other Kwantlen students. Ronald Vergara says, "A lot of students use the crosswalks to go home or to the mall. Sometimes when it's busy it does seem a bit more dangerous. If there was a car accident, I'm wondering if they shouldn't consider putting in lights for the crosswalks. It would be safer for people that walk a lot."



We do not have an unlimited budget. We can't just put up lights or pave roads
complaint or
- Tony Hillan

Although stoplights would help both pedestrians and drivers, the lower mainland as a whole seems to be getting more congested. Stop-

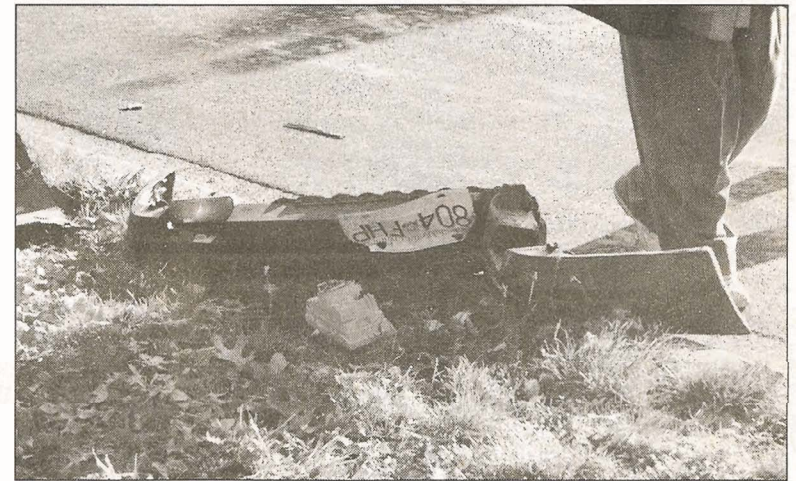
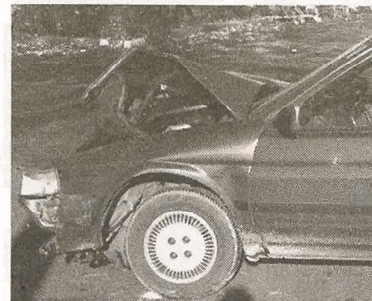
lights at the Kwantlen location might not be a priority for the city.

Tony Hillan, of the City of Richmond's Engineering and Public Works Department had this to offer, "Richmond in general is growing in population. We care for the safety of our citizens and we do what we can with the money allocated to us. Sometimes there's only so much we can do. If there is a hazardous zone in front of the college we'll look at it but there is probably a dozen other as equally dangerous places around the city."

Hillan points to finance as an issue.

"Like I said, we do not have an unlimited budget. We can't just put up lights or pave roads after every complaint or accident."

"We try to address the areas in the city we think require the most attention."



Joseph Ng/Kwantlen Chronicle

The results of an accident that occurred near Kwantlen's Richmond campus last week. The impact launched the vehicles onto the curb, scattering parts everywhere.